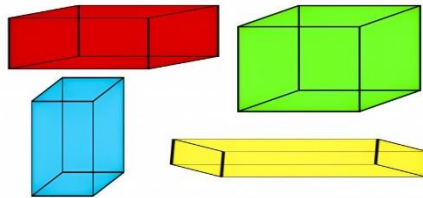
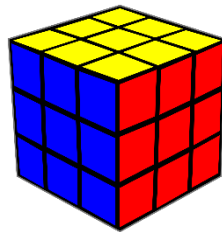


1st Class Maths June 3rd - 5th

Shapes



Dear girls and parents,

Ms Dermody here! I hope you have been well since and that you are all keeping safe. I am sending you some nice work for you to try at home. I would also like you to keep an eye on the school website where I will send you little messages from time to time.

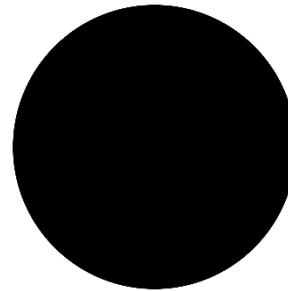
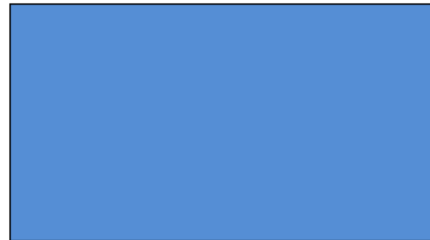
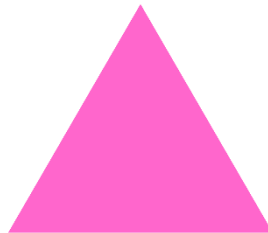


You might need a grown up to help you scroll down to find the maths pages at the end. You do NOT need to print the pages, just do them in your copy. When you have finished, you could email your work to me, I'd love to see it. My email address is bdermody@mercyprimaryschool.ie



With best wishes, missing you all, Ms Dermody

Monday:



This week we will look at 2d shapes. 2d means 2 dimensional or 2 faces. A front and a back.

Look at these shapes just above



Can you find a square?

What colour is it?

How many sides has it got?

How many corners has it got?

Are the sides the same length or different length?

Yes that's right, the square is the orange shape and all the sides are the same length.

Can you find a rectangle?

What colour is it?

How many sides has it got?

How many corners has it got?

Are the sides the same length or different length?

Yes that's right, the rectangle is the blue shape and it has 2 long sides and 2 short sides.

Can you find a triangle?

What colour is it?

How many sides has it got?

How many corners has it got?

Are the sides the same length or different length?

Yes that's right, the triangle is the pink shape and it has 3 sides.

Can you find a circle?

What colour is it?

How many sides has it got?

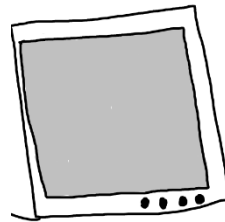
How many corners has it got?

Are the sides the same length or different length?

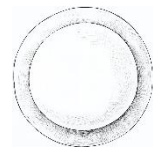
Yes that's right, the circle is the black shape and it is round.

Well done girls on your 2d shapes. Today I would like you to look around your house and see can you find many 2d shapes. You could write them like this and draw a picture also.

My TV is a rectangle shape. Here is my TV picture.

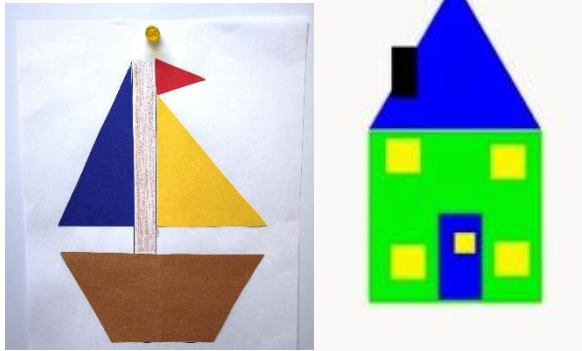


My plate is a circle. Here is picture.



Now can you go around your house and find as many 2d shapes as you can. Draw a picture and write the name of the shape. Do as many as you can!

Tuesday: Today I would like you girls to plan and make a picture made up of only 2d shapes. You could do a picture like this house and this boat. Can you name the shapes you see in these pictures? I would love to see your



finished pictures!!

Wednesday:

Look at these 3d shapes. A 3d shape is a shape that is 3 dimensional. This means that it isn't flat like the shapes



yesterday. It has lots of faces. If we look at a dice, it has six faces. A dice is a cube which is a 3d shape.



Can you name these shapes?

Well done! You are right! The grey shape is a cylinder. The brown shape is a sphere. The blue shape is a cube. The last shape is a cuboid.

Now look around your house and try to find as many 3d shapes as you can. For example, a box of tea bags is a cuboid. A ball is a sphere. See how many you can find. Draw some of them in your copy.

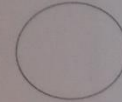
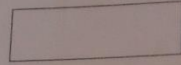
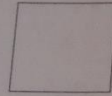


Thursday:

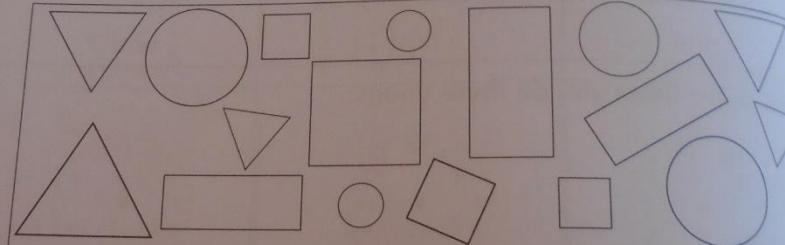
Do the worksheet in your copy. You can copy the 2d shapes into your copy before you do the colouring. Answer the 3d shape questions at the bottom of the worksheet.

Shapes

1. Name these shapes (**circle**, **square**, **rectangle**, **triangle**).



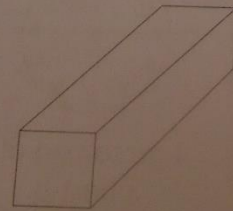
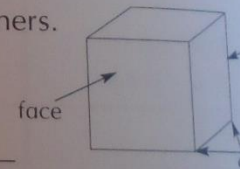
2. Colour the triangles red. Colour the squares blue.
Colour the circles green. Colour the rectangles yellow.



This is a **cube**. It has faces, edges and corners.
All the faces are of equal size.

How many faces has a cube? _____

What shape is each face? _____



This is a **cuboid**.

How many faces has a cuboid? _____

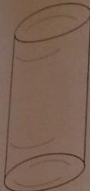
How many edges has a cuboid? _____

Are all the edges of equal length? _____

Are all the faces equal in size? _____

Friday: do the worksheet on 3d shapes in your copy.

5.



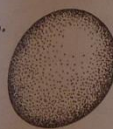
This is a **cylinder**.
Can you name two things we buy that are cylinders? _____

How many curved faces has a cylinder? _____

Can a cylinder roll? _____

How many flat faces has a cylinder? _____

6.



This is a **sphere**.
Can you name some spheres? _____

How many curved faces has a sphere? _____

7. Yes or No?

(a) A **cube** and a **cuboid** can slide but not roll. _____

(b) A **cylinder** and a **sphere** can roll. _____

(c) A **cylinder** can slide as well as roll. _____

8.

Add the numbers in the circles. _____

Add the numbers in the triangles. _____

Add the numbers in the rectangles. _____